

PLAIN "ARMOPANEL"

INTERIOR FINISH

CONT. CHANNEL
3" x 2 1/8" x 1/24"
FIXED
TO CONCRETE FLOOR

REINFORCED CONCRETE
FLOORING SYSTEM

" U " -GUIDE PREVENTS
POLYSTYRENE BOARDS
FROM DAMAGE

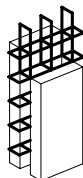
VERTICAL REBARS
AS REQUIRED

INTERIOR FINISH

INTERIOR FINISH

CONCRETE

NOTE
IT IS THE RESPONSIBILITY OF
THE DESIGNER TO IMPLEMENT
ARMOPANEL™ CONCRETE WALL
SYSTEM IN ACCORDANCE WITH
REQUIREMENTS OF LOCAL
BUILDING CODES AND REGULATIONS



Armopanel™
Wall System

HI-TECH BUILDING
SYSTEMS
CORPORATION

B-57 Corstate Ave.
Concord, Ontario,
L4K 4Y2, Canada
Tel: (905)738-0567
Fax: (905)738-0628
E-mail: htbs@connection.com

INTERIOR WALL,
REINF. FLOORING SYSTEM
SUPPORTING DETAIL

REV. NO.	REV. DATE:	FILE:	DWG NO.
DRAWN BY PR	DATE: 12/02/02	SCALE: N.T.S.	R-16