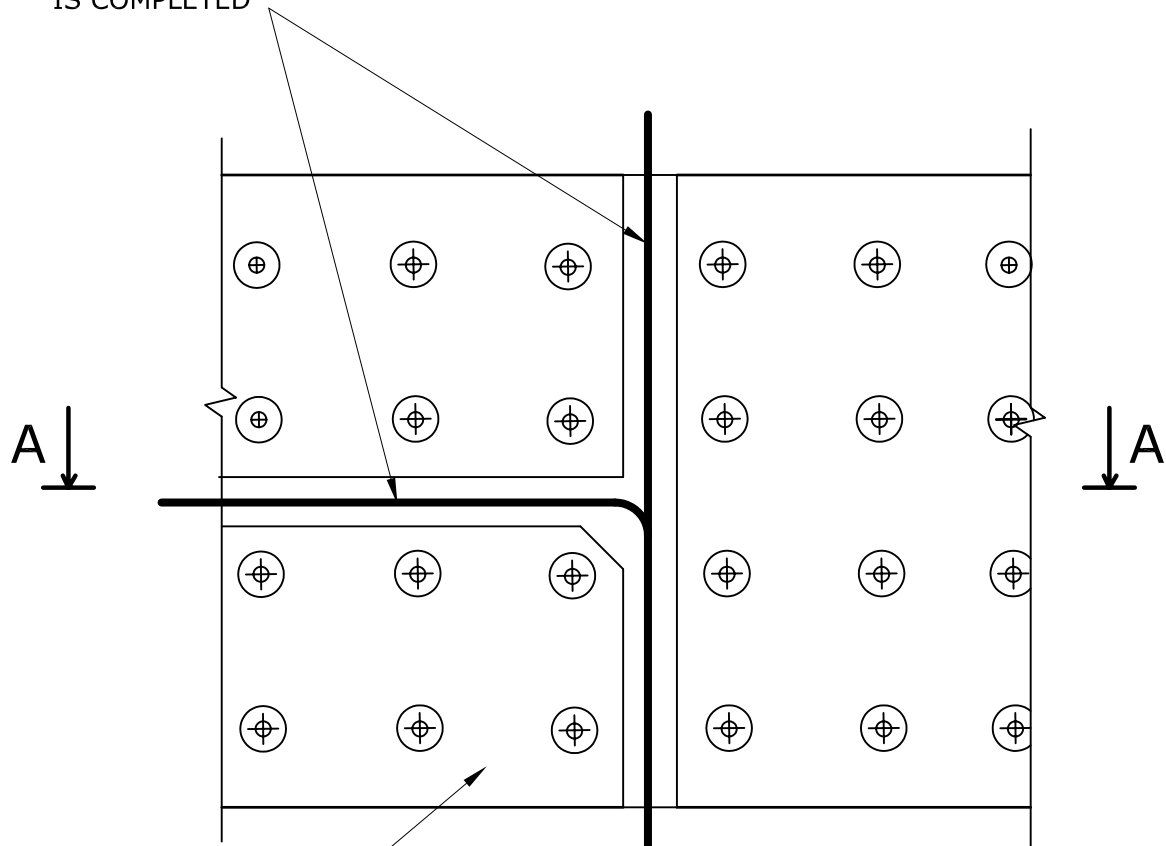
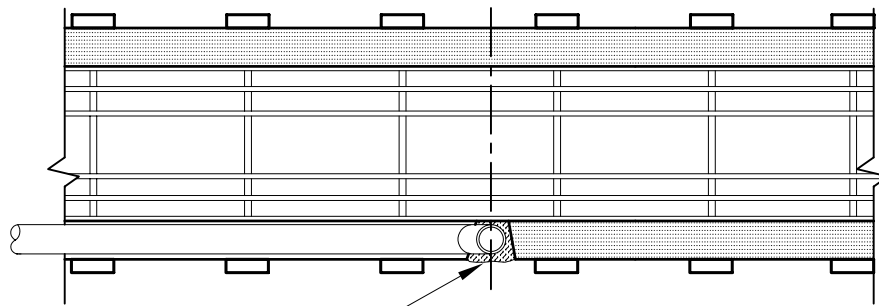


MARK PIPE ROUTE AND USE A HOT KNIFE, ELECTRICAL SOLDER GUN OR ROUTER TO CUT A NARROW PIPING GROVE 1 1/2" DEEP FOR SERVICES. PLYSTYRENE BOARD CAN BE CUT WHEN CURING OF CONCRETE IS COMPLETED



PLAIN "ARMOPANEL"

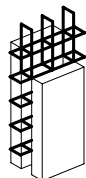
INSIDE VIEW



FOAM

A-A

NOTE  
 IT IS THE RESPONSIBILITY OF THE DESIGNER TO IMPLEMENT ARMOPANEL™ CONCRETE WALL SYSTEM IN ACCORDANCE WITH REQUIREMENTS OF LOCAL BUILDING CODES AND REGULATIONS



**Armopanel™**  
 Wall System

HI-TECH BUILDING SYSTEMS CORPORATION

B-57 Corstate Ave.  
 Concord, Ontario,  
 L4K 4Y2, Canada  
 Tel: (905)738-0567  
 Fax: (905)738-0628  
 E-mail: htbs@connection.com

**PLUMBING INSTALLATION.**  
**DIA. PIPE < 2" (51mm).**  
**TYPICAL DETAIL**

REV. NO.	REV. DATE:	FILE:	DWG NO.
DRAWN BY PR	DATE: 12/02/02	SCALE: N.T.S.	<b>R-19</b>