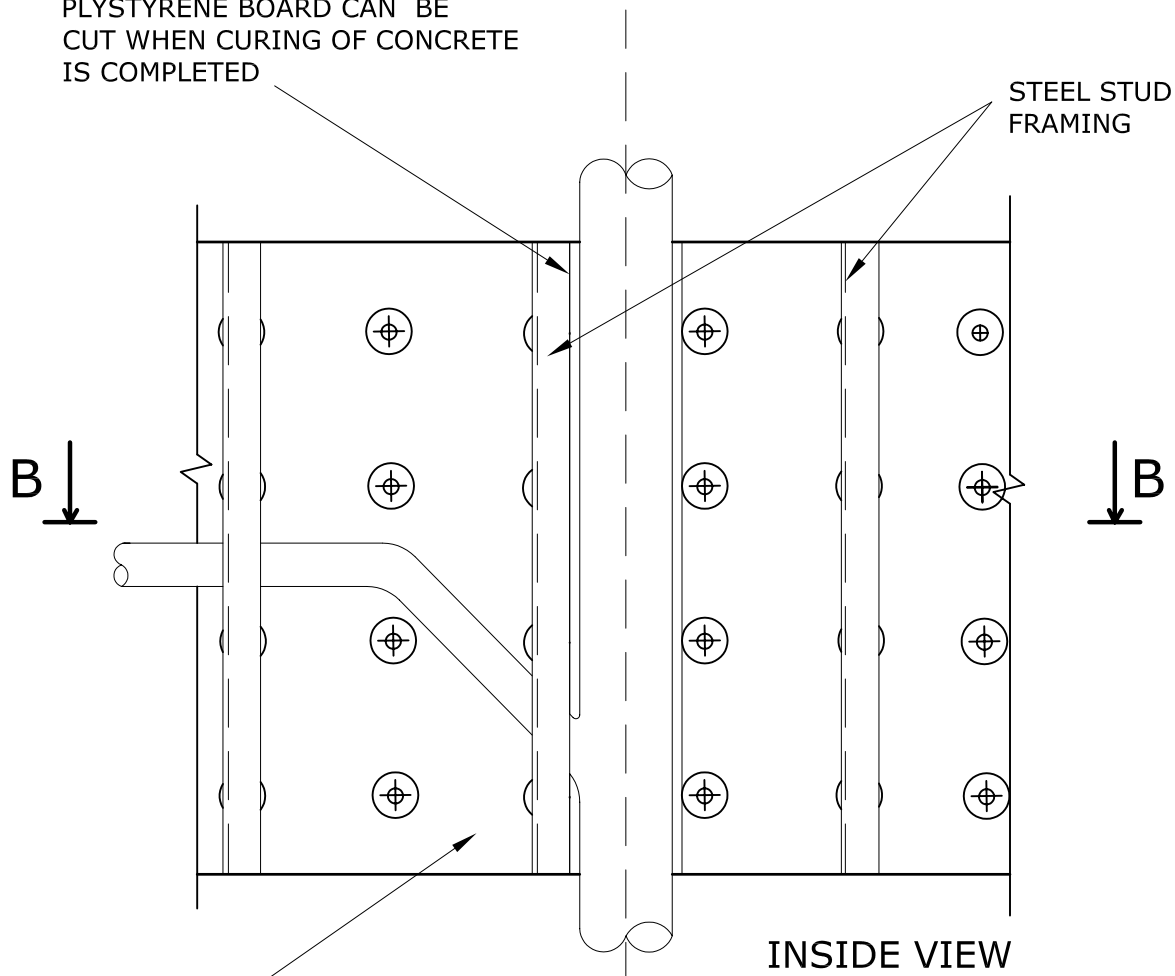
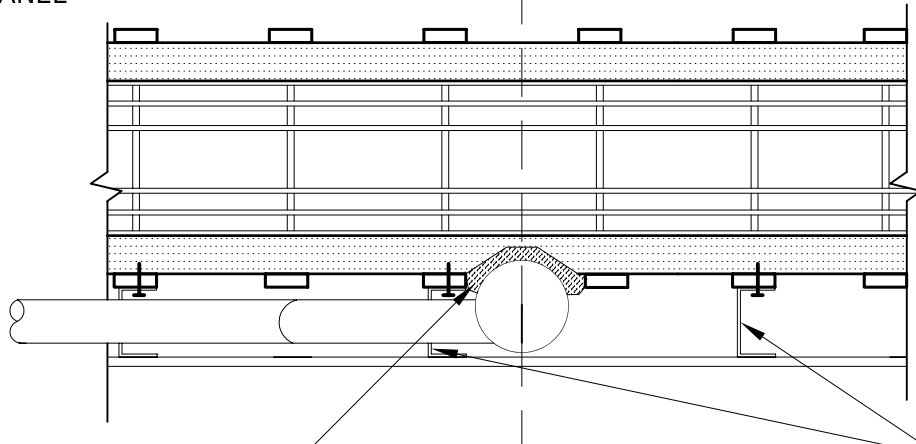


MARK PIPE ROUTE AND USE A HOT KNIFE, ELECTRICAL SOLDER GUN OR ROUTER TO CUT A NARROW PIPING GROVE 1 1/2" DEEP FOR SERVICES. PLYSTYRENE BOARD CAN BE CUT WHEN CURING OF CONCRETE IS COMPLETED



INSIDE VIEW

PLAIN "ARMOPANEL"

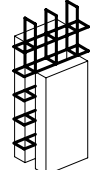


FOAM

B-B

STEEL STUD FRAMING

NOTE
IT IS THE RESPONSIBILITY OF THE DESIGNER TO IMPLEMENT ARMOPANEL™ CONCRETE WALL SYSTEM IN ACCORDANCE WITH REQUIREMENTS OF LOCAL BUILDING CODES AND REGULATIONS



HI-TECH BUILDING SYSTEMS CORPORATION

B-57 Corstate Ave.
Concord, Ontario,
L4K 4Y2, Canada
Tel: (905)738-0567
Fax: (905)738-0628
E-mail: htbs@connection.com

Armopanel™
Wall System

PLUMBING INSTALLATION.
DIA. PIPE > 2"(51mm).
TYPICAL DETAIL

| | | | |
|-------------|----------------|---------------|-------------|
| REV. NO. | REV. DATE: | FILE: | DWG NO. |
| DRAWN BY PR | DATE: 12/02/02 | SCALE: N.T.S. | R-20 |