

PLAIN "ARMOPANEL"

INTERIOR FINISH

CONT. CHANNEL  
3" x 2 1/8" x 1/24"  
FIXED  
TO CONCRETE FLOOR

CONCRETE

REINFORCED CONCRETE  
FLOOR SYSTEM

WATERPROOFING  
MEMBRANE

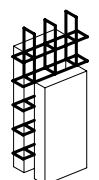
" U " -GUIDE PREVENTS  
POLYSTYRENE BOARDS  
FROM DAMAGE

VERTICAL REBARS  
AS REQUIRED

INTERIOR FINISH

8"-14" PLAIN  
"ARMOPANEL"

NOTE  
IT IS THE RESPONSIBILITY OF  
THE DESIGNER TO IMPLEMENT  
ARMOPANEL™ CONCRETE WALL  
SYSTEM IN ACCORDANCE WITH  
REQUIREMENTS OF LOCAL  
BUILDING CODES AND REGULATIONS



HI-TECH BUILDING  
SYSTEMS  
CORPORATION

B-57 Corstate Ave.  
Concord, Ontario,  
L4K 4Y2, Canada  
Tel: (905)738-0567  
Fax: (905)738-0628  
E-mail: htbs@connection.com

Armopanel™  
Wall System

REINFORCED CONCRETE FLOOR  
DETAIL

REV. NO.	REV. DATE:	FILE:	DWG NO.
DRAWN BY PR	DATE: 12/02/02	SCALE: N.T.S.	<b>ID-04</b>