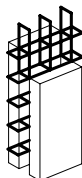


NOTE
 IT IS THE RESPONSIBILITY OF
 THE DESIGNER TO IMPLEMENT
 ARMOPANEL™ CONCRETE WALL
 SYSTEM IN ACCORDANCE WITH
 REQUIREMENTS OF LOCAL
 BUILDING CODES AND REGULATIONS



Armopanel™
 Wall System

HI-TECH BUILDING
 SYSTEMS
 CORPORATION

B-57 Corstate Ave.
 Concord, Ontario,
 L4K 4Y2, Canada
 Tel: (905)738-0567
 Fax: (905)738-0628

E-mail: htbs@connection.com

SECTION OF SIX STOREY
 EXTERIOR WALL.
 HTBS REINFORCED CONCRETE FLOOR.
 BASEMENT.

REV. NO.	REV. DATE:	FILE:	DWG NO.
DRAWN BY PR	DATE: 12/02/02	SCALE: N.T.S.	I-04