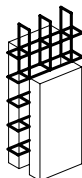


NOTE  
 IT IS THE RESPONSIBILITY OF  
 THE DESIGNER TO IMPLEMENT  
 ARMOPANEL™ CONCRETE WALL  
 SYSTEM IN ACCORDANCE WITH  
 REQUIREMENTS OF LOCAL  
 BUILDING CODES AND REGULATIONS



**Armopanel™**  
 Wall System

HI-TECH BUILDING  
 SYSTEMS  
 CORPORATION

B-57 Corstate Ave.  
 Concord, Ontario,  
 L4K 4Y2, Canada  
 Tel: (905)738-0567  
 Fax: (905)738-0628  
 E-mail: htbs@connection.com

**SECTION OF ONE STOREY.  
 FINISH-BRICK. EXTERIOR WALL.  
 CONCRETE WALL.  
 CONCRETE BASEMENT.**

REV. NO.	REV. DATE:	FILE:	DWG NO.
DRAWN BY PR	DATE: 12/02/02	SCALE: N.T.S.	<b>H-014</b>