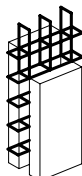


NOTE
 IT IS THE RESPONSIBILITY OF THE DESIGNER TO IMPLEMENT ARMOPANEL™ CONCRETE WALL SYSTEM IN ACCORDANCE WITH REQUIREMENTS OF LOCAL BUILDING CODES AND REGULATIONS



Armopanel™
 Wall System

HI-TECH BUILDING SYSTEMS CORPORATION

B-57 Corstate Ave.
 Concord, Ontario,
 L4K 4Y2, Canada
 Tel: (905)738-0567
 Fax: (905)738-0628
 E-mail: htbs@connection.com

SECTION OF TWO STOREY. EXTERIOR WALL. FINISH-BRICK. REINFORCED CONCRETE FLOOR. STEEL JOIST.

REV. NO.	REV. DATE:	FILE:	DWG NO.
DRAWN BY PR	DATE: 12/02/02	SCALE: N.T.S.	H-024